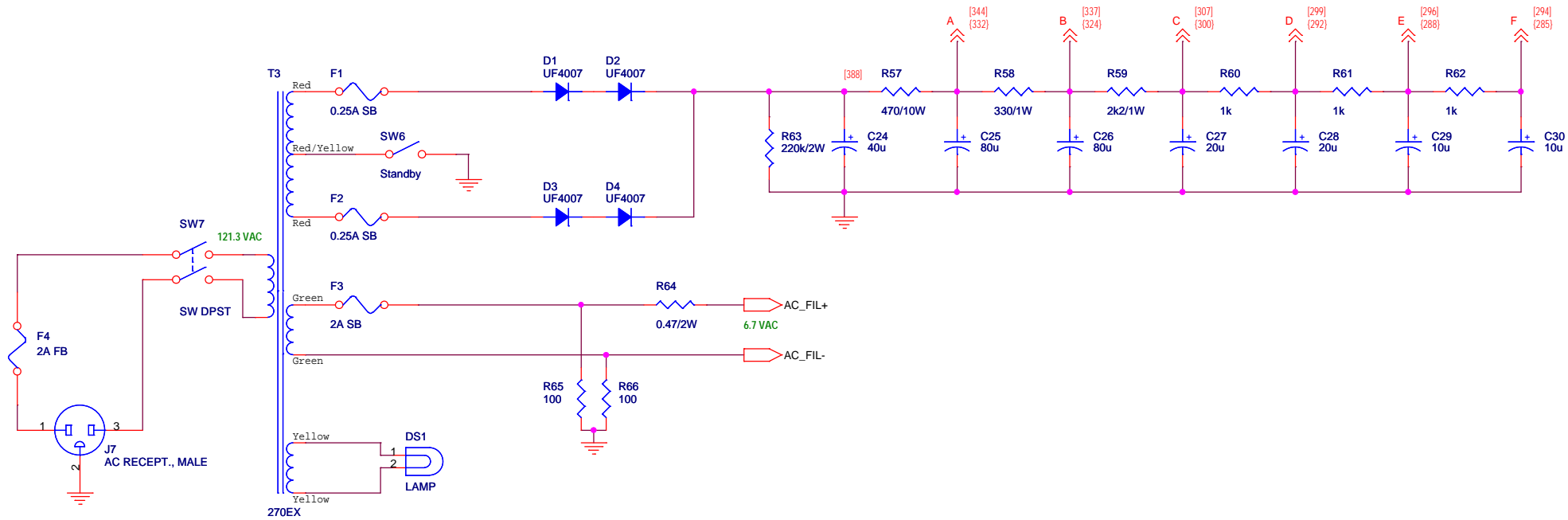


Voltage readings

[DC] Idle, with respect to chassis ground

[DC] voltage predicted by simulation



NOTES:

1. All capacitors 450V or higher unless noted otherwise.
2. All resistors 1/2 Watt unless noted otherwise.



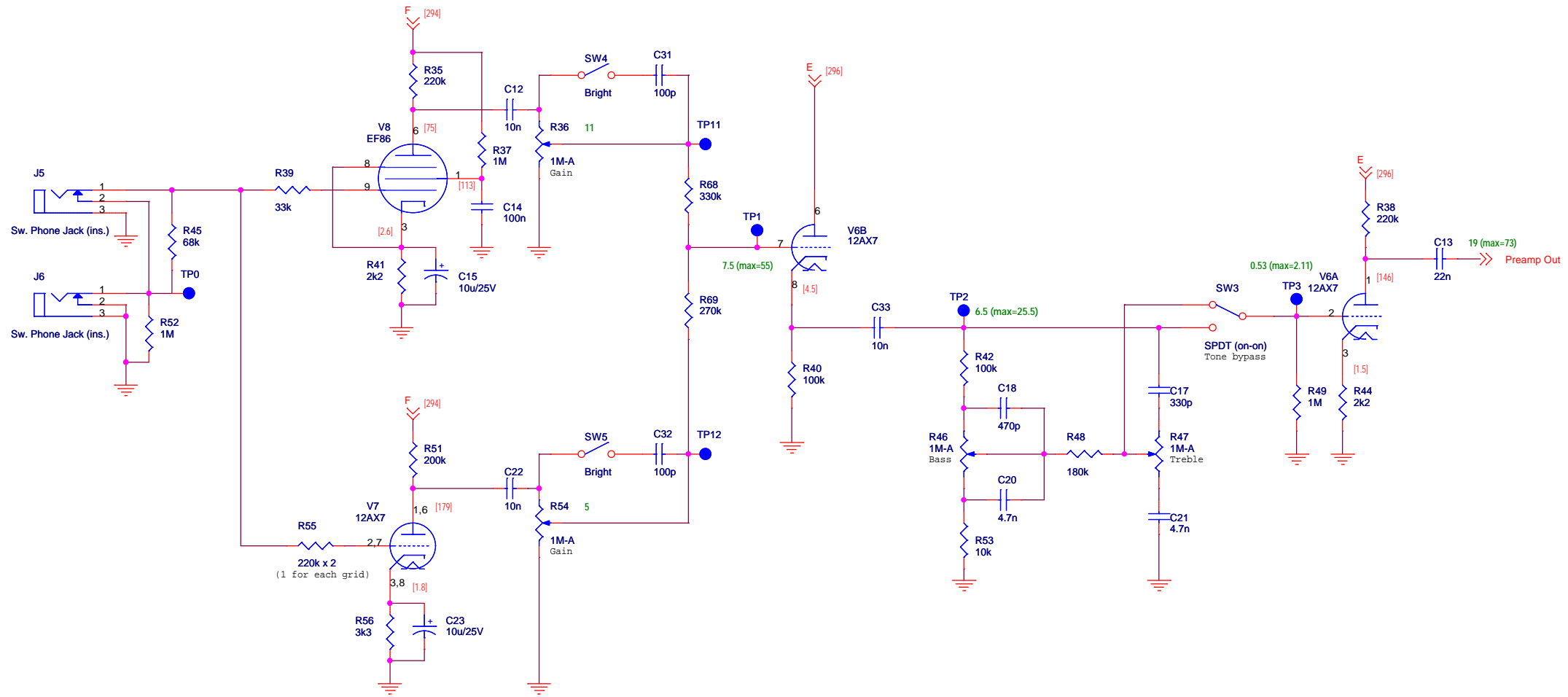
Harmonic Appliances
Verberator I

Size: B	Module: Power Supply
Date: Saturday, November 06, 2004	Sheet 1 of 4 Rev.: G
Copyright (c) 2003 Mark Lavelle	All rights reserved.

Voltage readings

AC peak-to-peak signal, measured with scope, using 0.5V 320Hz sine wave input, all controls at 12 o'clock (half) except reverb mix (at 9:00)

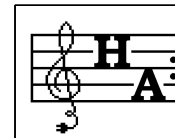
[DC] idle, with respect to chassis ground



NOTES:

1. All capacitors 450V or higher unless noted otherwise.
2. All resistors 1/2 Watt unless noted otherwise.

Rev. E: added bright switches.
Rev. F: added C33.



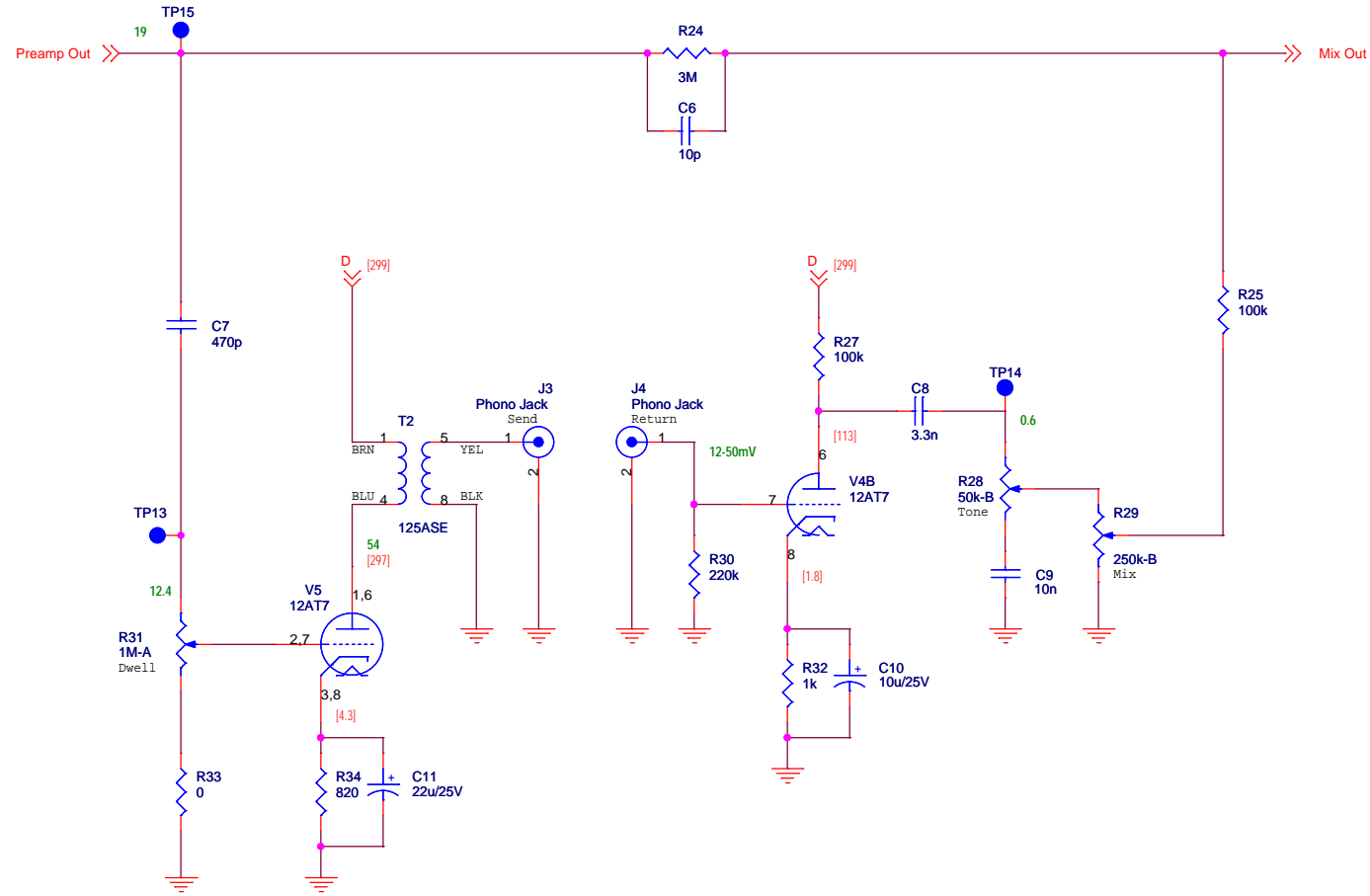
Harmonic Appliances
Verberator I

Size: B	Module: Preamp	Sheet 2 of 4	Rev.: G
Date: Saturday, November 06, 2004	Copyright (c) 2003 Mark Lavelle		All rights reserved.

Voltage readings

AC peak-to-peak signal, measured with scope, using 0.5V 320Hz sine wave input, all controls at 12 o'clock (half) except reverb mix (at 9:00)

[DC] idle, with respect to chassis ground



NOTES:

1. All capacitors 450V or higher unless noted otherwise.
2. All resistors 1/2 Watt unless noted otherwise.



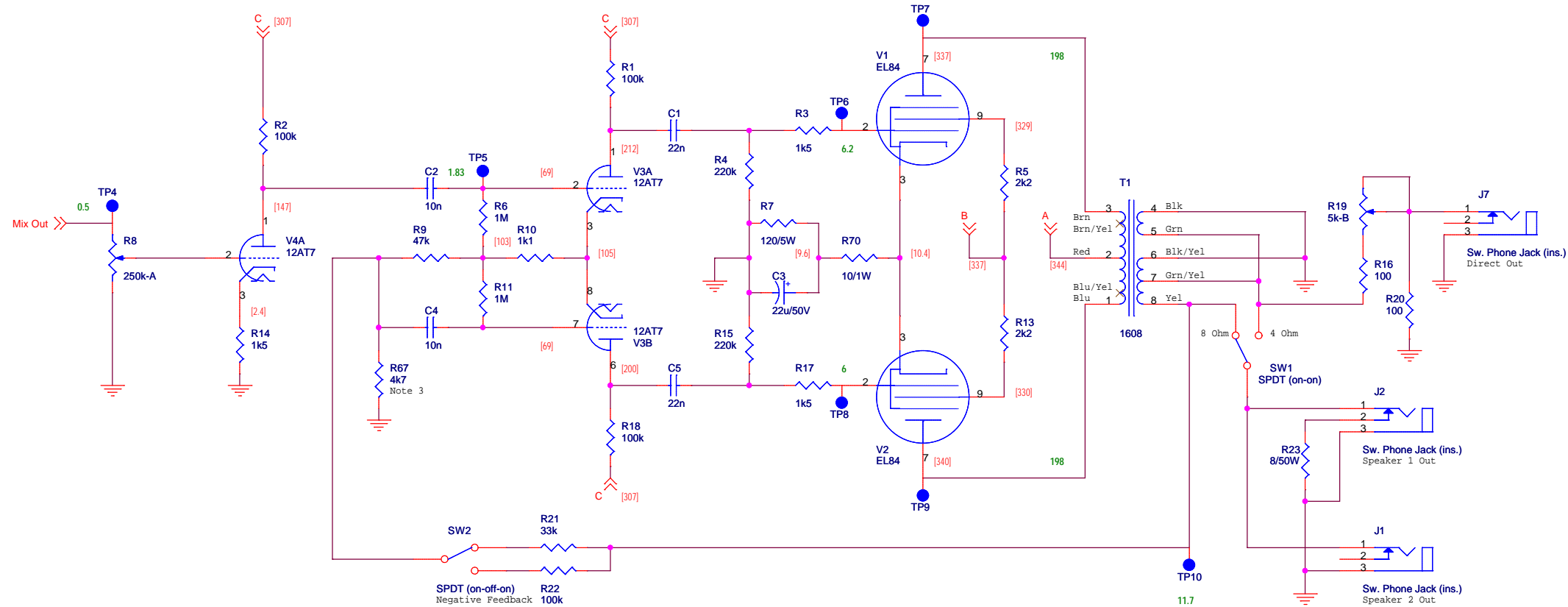
Harmonic Appliances
Verberator I

Size: B	Module: Reverb	Sheet 3 of 4	Rev.: G
Date: Sunday, July 25, 2004	Copyright (c) 2003 Mark Lavelle		
All rights reserved.			

Voltage readings

AC peak-to-peak signal, measured with scope, using 0.5V 320Hz sine wave input, all controls at 12 o'clock (half) except reverb mix (at 9:00)

[DC] idle, with respect to chassis ground



- NOTES:
1. All capacitors 450V or higher unless noted otherwise.
 2. All resistors 1/2 Watt unless noted otherwise.
 3. Experiment with 100nF (+/- ??) bypass caps and value of R67.

Rev. E: changed R16 (direct out) from 1k to 100; changed R5 & R13 (screen resistors) from 100 to 2k2.



Harmonic Appliances

Verberator I

Size: B	Module: Power Amp
Date: Saturday, November 06, 2004	Sheet 4 of 4 Rev.: G
Copyright (c) 2003 Mark Lavelle	All rights reserved.